



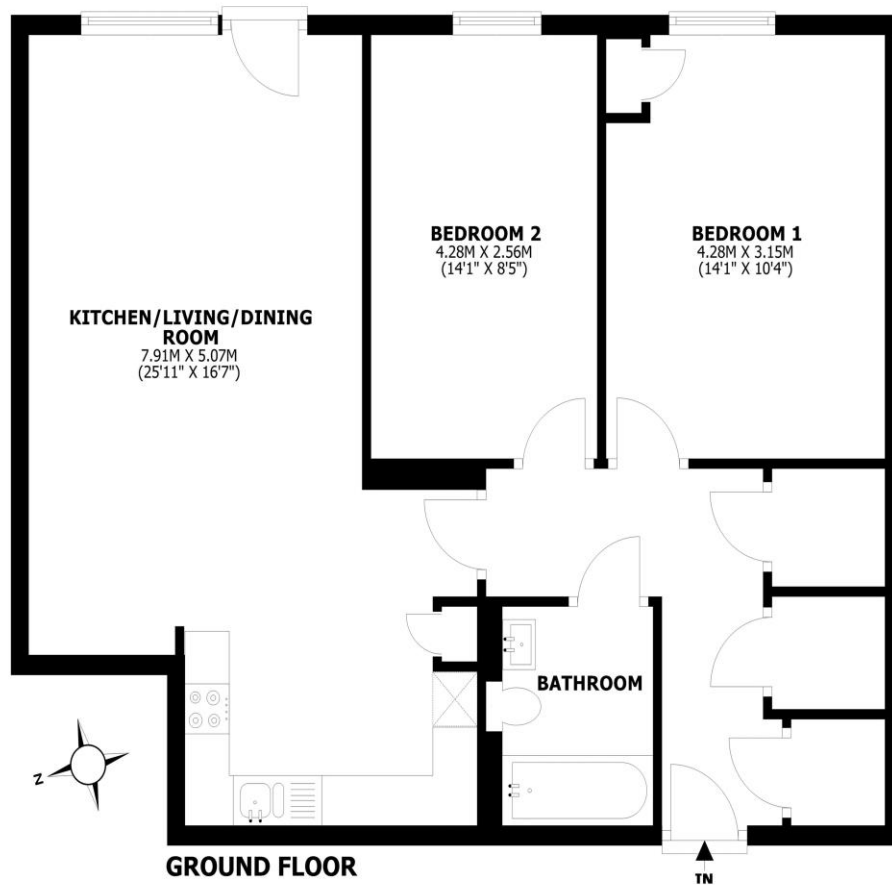
1 Brazier House Chertsey Surrey KT16 9QJ

Shared Ownership £81,250 for 25%



**Brazier House, Highwayman Grove, Chertsey KT16**

Total area: approx. 73.8 sq. metres (794.7 sq. feet)



This floorplan is for illustrative guidance only and is not to drawn to scale. Whilst every attempt has been made to ensure accuracy, measurements are approximate and should not be relied upon as a matter of fact. Maximum dimensions are given excluding small alcoves, etc unless otherwise stated.

****Shared Ownership Opportunity**** Discover this modern two-bedroom ground floor apartment in a nearly new development, ideally located in Chertsey. This charming home boasts a private outdoor patio and allocated parking, offering both comfort and convenience. Step inside to a beautifully presented interior, featuring a modern, neutral decor that creates a bright and airy atmosphere. The spacious accommodation is bathed in natural light, enhancing the feeling of openness. You'll find two generously sized double bedrooms and ample storage, including three large hallway cupboards. The open-plan living space seamlessly flows into the kitchen, with a door from the lounge leading directly to your highly desired private outdoor area. The apartment benefits from gas central heating and double glazing for year-round comfort. The development itself is meticulously maintained, offering secure entry systems and a resident's car park with your own allocated space, plus visitor parking. A communal bike store is also available. Enjoy a fantastic location approximately 1 mile from Chertsey town centre and just 0.6 miles from Chertsey Train Station. Chertsey is a highly sought-after town for commuters, providing easy access to Junction 11 of the M25. St Peter's Hospital is also conveniently close by. Available to purchase either as shared ownership purchase at 25% or at the full 100% value. EPC Rating: B



AGENTS NOTES: These details do not constitute any part of an offer or contract. In issuing them we do not have any authority to give any warranty or representation whatsoever in respect of this property. These details are provided without any responsibility on our part or the part of the vendors. No statements in these details are to be relied upon as representations of fact and purchasers should satisfy themselves by inspection or otherwise as to the accuracy of the statements contained therein.

Equipment: We have not tested the equipment or central heating system mentioned in these particulars and purchasers are advised to satisfy themselves as to their working order and condition.

Measurements: Great care is taken when measuring but measurements should not be relied upon for ordering carpets, equipment, etc.